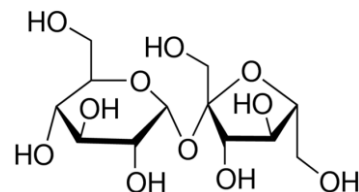


SPECIFICATION : SUCROSE AR

| | | | | | |
|---------------------|-------------------|--------------------|-------------------|-----------------|------------------|
| Issue date | 23/04/2018 | Review date | 22/04/2023 | Location | All Units |
| Version No.: | 00 | Supersedes | -- | Page No | 1 of 1 |

PRODUCT DETAILS

| | | |
|---|---------------------|---|
| 1 | Molecular Formula | C ₁₂ H ₂₂ O ₁₁ |
| 2 | Product code | S100 |
| 3 | Molecular weight | 342.30 |
| 4 | CAS No | 57-50-1 |
| 5 | Risk Statement No | -- |
| 6 | Safety Statement No | 24/25 |
| 7 | UN No. | -- |



PACKING DETAILS

| | | |
|---|--------------|-----------|
| | Product code | Pack size |
| 1 | S10010 | 500 g |
| 2 | S10013 | 5 Kg |

PRODUCT SPECIFICATION

SL. No. TEST PARAMETERS

| | |
|----|-----------------------------|
| 1 | Description |
| 2 | Clarity |
| 3 | Specific optical rotation |
| 4 | Chloride (Cl) |
| 5 | Sulphate (SO ₄) |
| 6 | Sulphated ash |
| 7 | Heavy metals (as Pb) |
| 8 | Iron (Fe) |
| 9 | Reducing sugars |
| 10 | Loss in drying (105°C) |

LIMITS

| |
|---|
| Dry colourless crystals or almost white crystalline powder. |
| 10% solution in water is clear and colourless. |
| Between +66.3 and 66.8° |
| Not more than 0.0005% |
| Not more than 0.002% |
| Not more than 0.005% |
| Not more than 0.0005% |
| Not more than 0.0001% |
| Not more than 0.01% |
| Not more than 0.05% |

SAFETY SYMBOLS