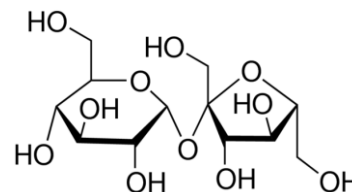


SPECIFICATION : SUCROSE LR

| | | | | | |
|---------------------|-------------------|--------------------|-------------------|-----------------|------------------|
| Issue date | 23/04/2018 | Review date | 22/04/2023 | Location | All Units |
| Version No.: | 00 | Supersedes | -- | Page No | 1 of 1 |

PRODUCT DETAILS

| | | |
|---|---------------------|---|
| 1 | Molecular Formula | C ₁₂ H ₂₂ O ₁₁ |
| 2 | Product code | S096 |
| 3 | Molecular weight | 342.30 |
| 4 | CAS No | 57-50-1 |
| 5 | Risk Statement No | -- |
| 6 | Safety Statement No | 24/25 |
| 7 | UN No. | -- |



PACKING DETAILS

| | | |
|---|--------------|-----------|
| | Product code | Pack size |
| 1 | S09610 | 500 g |
| 2 | S09613 | 5 Kg |

PRODUCT SPECIFICATION

| SL. No. | TEST PARAMETERS |
|----------------|---------------------------|
| 1 | Description |
| 2 | Specific optical rotation |
| 3 | Heavy metals (as Pb) |
| 4 | Reducing sugars |

LIMITS

| |
|--|
| Dry colourless crystals or almost white crystalline powder |
| Between +66.3° and +66.8° |
| Not more than 0.005% |
| Passes the test |

SAFETY SYMBOLS