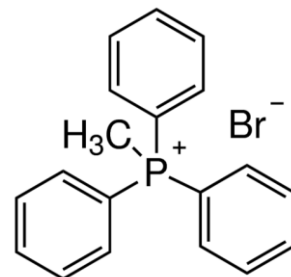


**SPECIFICATION : METHYLTRIPHENYLPHOSPHONIUM BROMIDE LR**

<b>Issue date</b>	<b>16/04/2018</b>	<b>Review date</b>	<b>15/04/2023</b>	<b>Location</b>	<b>All Units</b>
<b>Version No.:</b>	<b>00</b>	<b>Supersedes</b>	<b>--</b>	<b>Page No</b>	<b>1 of 1</b>

**PRODUCT DETAILS**

1	Molecular Formula	$\text{CH}_3\text{P}(\text{C}_6\text{H}_5)_3\text{Br}$
2	Product code	M062
3	Molecular weight	357.22
4	CAS No	1779-49-3
5	Risk Statement No	20/21/22
6	Safety Statement No	36/37
7	UN No.	---



**PACKING DETAILS**

	Product code	Pack size
1	M06205	25g
	M06207	100g

**PRODUCT SPECIFICATION**

<b>SL. No.</b>	<b>TEST PARAMETERS</b>	<b>LIMITS</b>
1	Description	A White powder.
2	Assay	Not less than 98.0%
3	Melting range	Between 226.0° and 236.0°C

**SAFETY SYMBOLS**



Harmful / Irritant