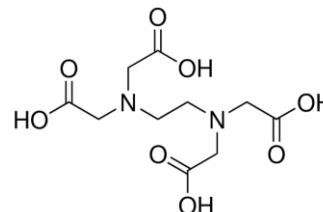


SPECIFICATION : ETHYLENEDIAMINETETRAACETIC ACID LR

| | | | | | |
|---------------------|-------------------|--------------------|-------------------|-----------------|------------------|
| Issue date | 09/04/2018 | Review date | 08/04/2023 | Location | All Units |
| Version No.: | 00 | Supersedes | -- | Page No | 1 of 1 |

PRODUCT DETAILS

| | | |
|---|---------------------|---|
| 1 | Molecular Formula | (HO ₂ CCH ₂) ₂ NCH ₂ C H ₂ N(CH ₂ CO ₂ H) ₂ |
| 2 | Product code | D006 |
| 3 | Molecular weight | 292.24 |
| 4 | CAS No | 60-00-4 |
| 5 | Risk Statement No | 36/37/38 |
| 6 | Safety Statement No | 26-37/38 |
| 7 | UN No. | UN3077 |



PACKING DETAILS

| | | |
|---|--------------|-----------|
| | Product code | Pack size |
| 1 | E00507 | 100g |
| 2 | E00510 | 500g |

PRODUCT SPECIFICATION

SL. No. TEST PARAMETERS

| | |
|---|-----------------------------|
| 1 | Description |
| 2 | Clarity |
| 3 | Assay |
| 4 | Chloride (Cl) |
| 5 | Sulphate (SO ₄) |
| 6 | Sulphated ash |

LIMITS

| |
|--|
| Colourless crystals or white crystalline powder. |
| 10% solution in the mixture of dilute ammonia and water is clear and colourless. |
| Not less than 99.0% |
| Not more than 0.01% |
| Not more than 0.01% |
| Not more than 0.2% |

SAFETY SYMBOLS



Harmful / Irritant