

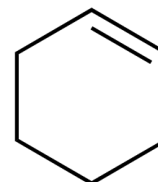
Department: Quality Control      Document No: LCPL/QSD/QAD/11      SOP No.: DB/SOP/QC/11-C231

**SPECIFICATION : CYCLOHEXENE**

Issue date	26/03/2018	Review date	25/03/2023	Location	All Units
Version No.:	00	Supersedes	--	Page No	1 of 1

**PRODUCT DETAILS**

1	Molecular Formula	C <sub>6</sub> H <sub>10</sub>
2	Product code	C231
3	Molecular weight	82.14
4	CAS No	110-83-8
5	Risk Statement No	11-21/22-65
6	Safety Statement No	16-36/37
7	UN No.	UN2256



**PACKING DETAILS**

	Product code	Pack size
1	C23130	500mL
2	C23132	2.5L

**PRODUCT SPECIFICATION**

SL. No.	TEST PARAMETERS	LIMITS
1	Description	A clear colourless liquid.
2	Identification *By GC)	Confirm to standard
3	Miscibility	Miscible with most organic solvents
4	Distillation range	Between 81.0° and 83.0°
5	Assay (GC)	Not less than 99.0%
6	Weight per mL at 20°C	Between 0.810 g and 0.811 g
7	Refractive index at 20°C	Between 1.444 and 1.448
8	Non volatile matter	Not more than 0.01%

**SAFETY SYMBOLS**



Flammable



Health hazard



Toxic