

Department: Quality Control

Document No: LCPL/QSD/QAD/11

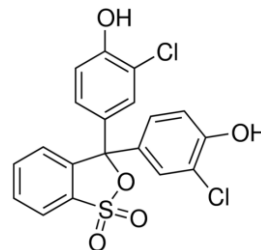
SOP No.: DB/SOP/QC/11-C073

**SPECIFICATION : CHLOROPHENOL RED INDICATOR**

Issue date	26/03/2018	Review date	25/03/2023	Location	All Units
Version No.:	00	Supersedes	--	Page No	1 of 1

**PRODUCT DETAILS**

1	Molecular Formula	C <sub>19</sub> H <sub>12</sub> Cl <sub>2</sub> O <sub>5</sub> S
2	Product code	C073
3	Molecular weight	423.27
4	CAS No	4430-20-0
5	Risk Statement No	36/37/38
6	Safety Statement No	26-36/39
7	UN No.	---



**PACKING DETAILS**

	Product code	Pack size
1	C07303	5 g

**PRODUCT SPECIFICATION**

SL. No.	TEST PARAMETERS	LIMITS
1	Description	Green to red-brown powder.
2	Clarity	A 0.1 % solution in ethanol is clear solution.
3	pH Range	Between 4.8 and 6.4
4	Absorption maxima in NaOH 0.1 mol/L	Between 572nm and 575 nm
5	Loss on drying	Not more than 8.0%

**SAFETY SYMBOLS**