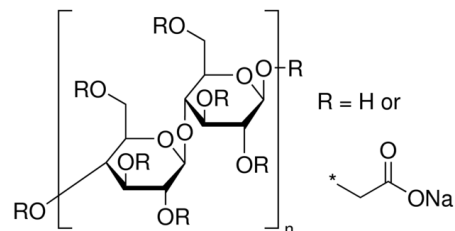


SPECIFICATION : CARBOXY METHYL CELLULOSE SODIUM

Issue date	26/03/2018	Review date	25/03/2023	Location	All Units
Version No.:	00	Supersedes	--	Page No	1 of 1

PRODUCT DETAILS

1	Molecular Formula	---
2	Product code	C069
3	Molecular weight	---
4	CAS No	9004-32-4
5	Risk Statement No	---
6	Safety Statement No	24/25
7	UN No.	---



PACKING DETAILS

	Product code	Pack size
1	C06910	500 g

PRODUCT SPECIFICATION

SL. No. TEST PARAMETERS

LIMITS

1	Description	White or almost white granular powder, hygroscopic after drying.
2	Assay (Na: on dried basis)	Between 6.5% and 10.0%
3	pH value (1% w/v water)	Between 3.0 and 8.0
4	Viscosity (1% w/v water at 20°C)	Between 1100cPs and 1900 cPs
5	Water insoluble matter	Passes test.
6	Chloride (Cl)	Not more than 0.25%
7	Sulphated ash (on dried substances)	Between 20.0% and 33.3%
8	Arsenic (As)	Not more than 0.0003%
9	Heavy metals (as Pb)	Not more than 0.002%
10	Iron (Fe)	Not more than 0.02%
11	Sodium glycolate	Not more than 0.4%
12	Loss on drying (110°)	Not more than 10.0%

SAFETY SYMBOLS