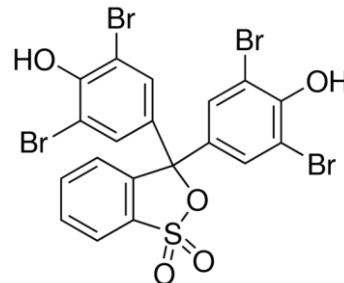


**SPECIFICATION : BROMOPHENOL BLUE POWDER**

|                     |                   |                    |                   |                 |                  |
|---------------------|-------------------|--------------------|-------------------|-----------------|------------------|
| <b>Issue date</b>   | <b>15/05/2018</b> | <b>Review date</b> | <b>14/05/2023</b> | <b>Location</b> | <b>All Units</b> |
| <b>Version No.:</b> | <b>00</b>         | <b>Supersedes</b>  | <b>--</b>         | <b>Page No</b>  | <b>1 of 1</b>    |

**PRODUCT DETAILS**

|   |                     |                        |
|---|---------------------|------------------------|
| 1 | Molecular Formula   | $C_{19}H_{10}Br_4O_5S$ |
| 2 | Product code        | B053                   |
| 3 | Molecular weight    | 669.96                 |
| 4 | CAS No              | 115-39-9               |
| 5 | Risk Statement No   | ---                    |
| 6 | Safety Statement No | 22-24/25               |
| 7 | UN No.              | ---                    |



**PACKING DETAILS**

|   |              |           |
|---|--------------|-----------|
|   | Product code | Pack size |
| 1 | B05303       | 5 g       |
| 2 | B05305       | 25 g      |

**PRODUCT SPECIFICATION**

**SL. No. TEST PARAMETERS**

**LIMITS**

|   |                                       |  |
|---|---------------------------------------|--|
| 1 | Description                           | Pale orange coloured crystalline powder.                     |
| 2 | Clarity                               | Solution of 0.1 g in 100 mL of 50% aqueous alcohol is clear. |
| 3 | pH range 2.8 – 4.6 (yellow to violet) | Passes test  |
| 4 | Absorption maxima at pH 3.0           | Between 434nm and 439 nm                                     |
| 5 | Absorption maxima at pH 4.6           | Between 590nm and 593 nm                                     |
| 6 | Sensitivity                           | Passes test  |
| 7 | Melting point                         | Not less than 279.0°C (with decomposition)                   |
| 8 | Loss on drying (110°C)                | Not more than 1.0%   |

**SAFETY SYMBOLS**